

**Technologically,  
Advanced, Yet Economical!**



# WAFER TYPE SWING CHECK VALVE

SERIES- 750



Our latest addition in Swing Plate Check valve is Specialized Engineered Valve with Seat in PTFE / TFM and Valve Body/Disc in all Exotic Alloys like HAESTALLOY C-22, R-55, S.S904-L, ALLOY-20, DUPLEX S.S.316/S.S.316-L. This Valve MOC is selected in consultation with the Buyer makes it an ideal Check valve for all their Corrosive and Solvent application Services where standard Elastomer / Rubber Seat, Metal to Metal Seat is not suitable.

**Size 50 mm to 900 mm**

**Application:**

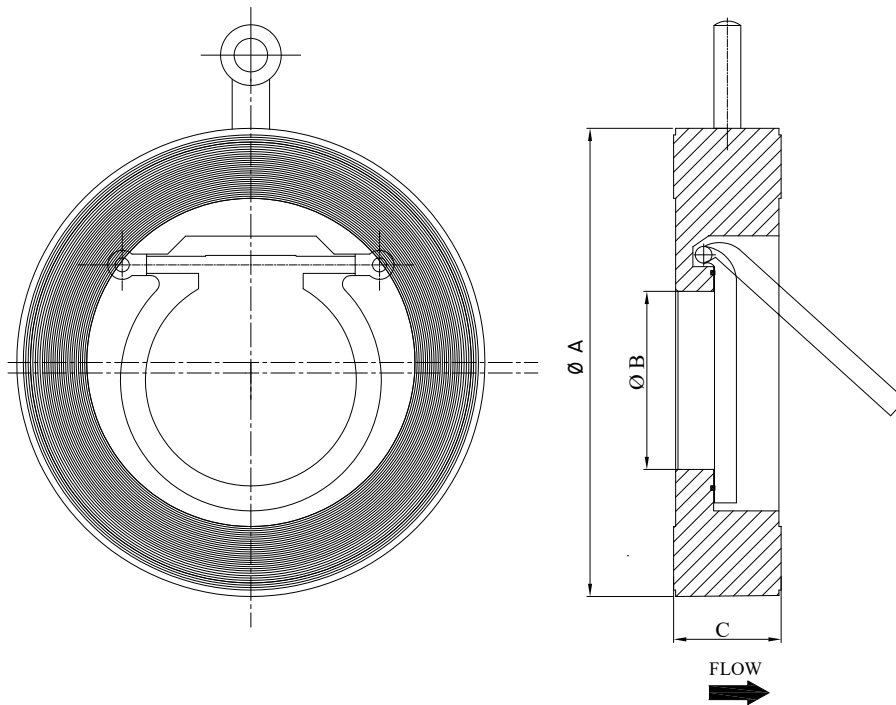
- Chemical Processing**
- Food and Pharma Industries**
- Filtration & Solvent Extraction Plants**
- Paper & Pulp Processing**
- Corrosive Liquid and Gas**
- Sugar Paper & Pulp Processing**
- Offshore & shipping Industry**
- Water & Effluent treatment plants**



**Quality, At It's  
Best Always...!**

[tdkchemtrol.com](http://tdkchemtrol.com)

TDK WAFER SWING CHECK VALVE is self-operating Check Valve designed to prevent backflow of gas or liquid media. It is extremely compact design / Construction & available in all corrosion resistant Steel Alloys with an Elastomer/ PTFE Seal. This Seal gives a positive shut-off even at low differential pressures. The seal is preferentially located in the body out of flow path ensuring long operating life. A variety of elastomers are available to suit various operating conditions.



Size MM	A	B	C
50	103	30	19
65	122	35	19
80	134	45	19
100	173	65	19
125	195	116	19
150	220	116	19
200	277	150	29
250	337	191	29
300	407	229	38
350	448	266	45
400	512	310	51
450	546	356	60
500	602	406	63
600	714	489	70
750	882	610	76
900	1047	730	89

Dimension 'A' Shown as per ASA 150 # Flanges

**Size Range:**  
50 MM TO 900 MM

**Design/Manuf. Std:**  
API - 6D

**Mounting:**  
Horizontal Or Vertical

**Flange. Standard:**  
ASA 125 /150, 300 BS-10  
TABLE D / E DIN - ND-10, 16,  
25, JIS - 10 K

**Pressure Rating:**  
CLASS, 150, 300, 600, 900

**Testing:**  
API 598

#### MATERIAL OF CONSTRUCTION - OPTIONS

BODY	DISC & SHAFT	SEAT
CAST IRON as per IS FG 220 DUCTILE IRON -	CAST IRON as per IS FG 220 DUCTILE IRON	PTFE / TFM
CARBON STEEL as per ASTM A 216 GR. WCB	CARBON STEEL as per ASTM A 216 GR. WCB	NITRILE RUBBER
S.S.304 /S.S.316 /316L as per ASTM A 351 CF8 CF8M/ CF3M	S.S.304 / S.S.316 /316L as per ASTM A 351 CF8 /CF8M/ CF3M	EPDM RUBBER
DUPLEX /SUPER DUPLEX - as per ASTM A 894 GR CE8MN /CE3MN	DUPLEX /SUPER DUPLEX - as per ASTM A 894 GR CE8MN /CE3MN	VITON RUBBER
ALLOY- 20 as per ASTM A 351 CN7M	ALLOY- 20 as per ASTM A 351 CN7M	HYPLON RUBBER
S.S.904-L / R-55	S.S.904-L / R-55	NEOPRENE RUBBER
HAESTALLOY C-22 as per ASTM A 894 CX2MW	HAESTALLOY C-22 as per ASTM A 894 CX2MW	SILICON RUBBER



tdkchemtrol.com

### TDK CHEMTROL INDIA

Unico Industrial Park, Unit No.5, Building No.3A,  
Tungreshwar Road, Off. Western Express Highway, Vasai  
East, District Palghar - 401208. Maharashtra, India  
Phone: +91 9892791579 | 7700962263 | 7700911522  
Email: info@tdkchemtrol.com

All Statements, Technical Details & Recommendations in this flyer are for General information only. Purchasers are expected to make their own Test to determine the suitability of these Products for their particular purpose. The Manufacturer is not responsible for individual system requirements. Consult TDK CHEMTROL INDIA for the specific requirements and material selection for your intended application. The right to change or modify the Product design or product without prior notice is reserved.